

WALL LEGEND
REFER TO FINISHES SCHEDULE (IF APPLICABLE)
WALL TYPES
1 20mm PRE CAST CONCRETE PANEL - LINING AS PER LEGEND - INSULATION AS PER HANDBOOK REPORT
2 150mm PRE CAST CONCRETE PANEL - LINING AS PER LEGEND - NO INSULATION
3 175mm PRE CAST CONCRETE PANEL - LINING AS PER LEGEND - INSULATION AS PER HANDBOOK REPORT
4 100mm PRE CAST CONCRETE PANEL - LINING AS PER LEGEND - NO INSULATION
5 20mm PRE CAST CONCRETE PANEL WITH 10mm PRE CAST STUD FRAMED WALLS - INSULATION AS PER HANDBOOK REPORT - CAVITY AS PER DIMENSION - COATING AS PER LEGEND
6 150mm PRE CAST CONCRETE PANEL WITH 75mm GLASS WOOL INSULATION BATS - INSULATION AS PER HANDBOOK REPORT
7 150mm PRE CAST CONCRETE PANEL WITH 75mm TIMBER STUD FRAMED WALLS - INSULATION AS PER HANDBOOK REPORT - CAVITY AS PER DIMENSION - COATING AS PER LEGEND
8 90mm STEEL STUD FRAMED WALLS INSTALLED TO MANUFACTURERS RECOMMENDATIONS - LINING AS PER LEGEND - INSULATION AS PER HANDBOOK REPORT
9 150mm PRE CAST CONCRETE PANEL WITH 40mm STEEL STUD FRAMED WALLS INSTALLED TO MANUFACTURERS RECOMMENDATIONS WITH 12mm CAVITY (9mm CAVITY AS PER DIMENSION) - COATING AS PER LEGEND - 75mm GLASS WOOL INSULATION BATS
10 90mm STEEL STUD FRAMED WALLS INSTALLED TO MANUFACTURERS RECOMMENDATIONS - LINING AS PER LEGEND - INSULATION AS PER HANDBOOK REPORT
11 110mm RECLAIMED RED CLAY BRICK WORK
12 90mm TIMBER STUD FRAMED WALLS INSTALLED TO MANUFACTURERS RECOMMENDATIONS - LINING AS PER LEGEND - INSULATION AS PER HANDBOOK REPORT
13 75mm REBEL POWER PANEL ON 50mm TIMBER STUD FRAMED WALLS INSTALLED TO MANUFACTURERS RECOMMENDATIONS - LINING AS PER LEGEND - INSULATION AS PER HANDBOOK REPORT

1

2

3

4

5

6

7

FLOOR TO FLOOR SEPARATION NOTE
FLOOR TO FLOOR SEPARATION MUST OCCUR VIA FIRE RATED FLOOR PENETRATIONS

FLOOR WASTE NOTE
ALL ROOMS WITH A VESSEL REQUIRE A FLOOR WASTE IF THERE ARE NO BUILT IN OVERFLOW PROVISIONS

BARKER GARDENS

F

E

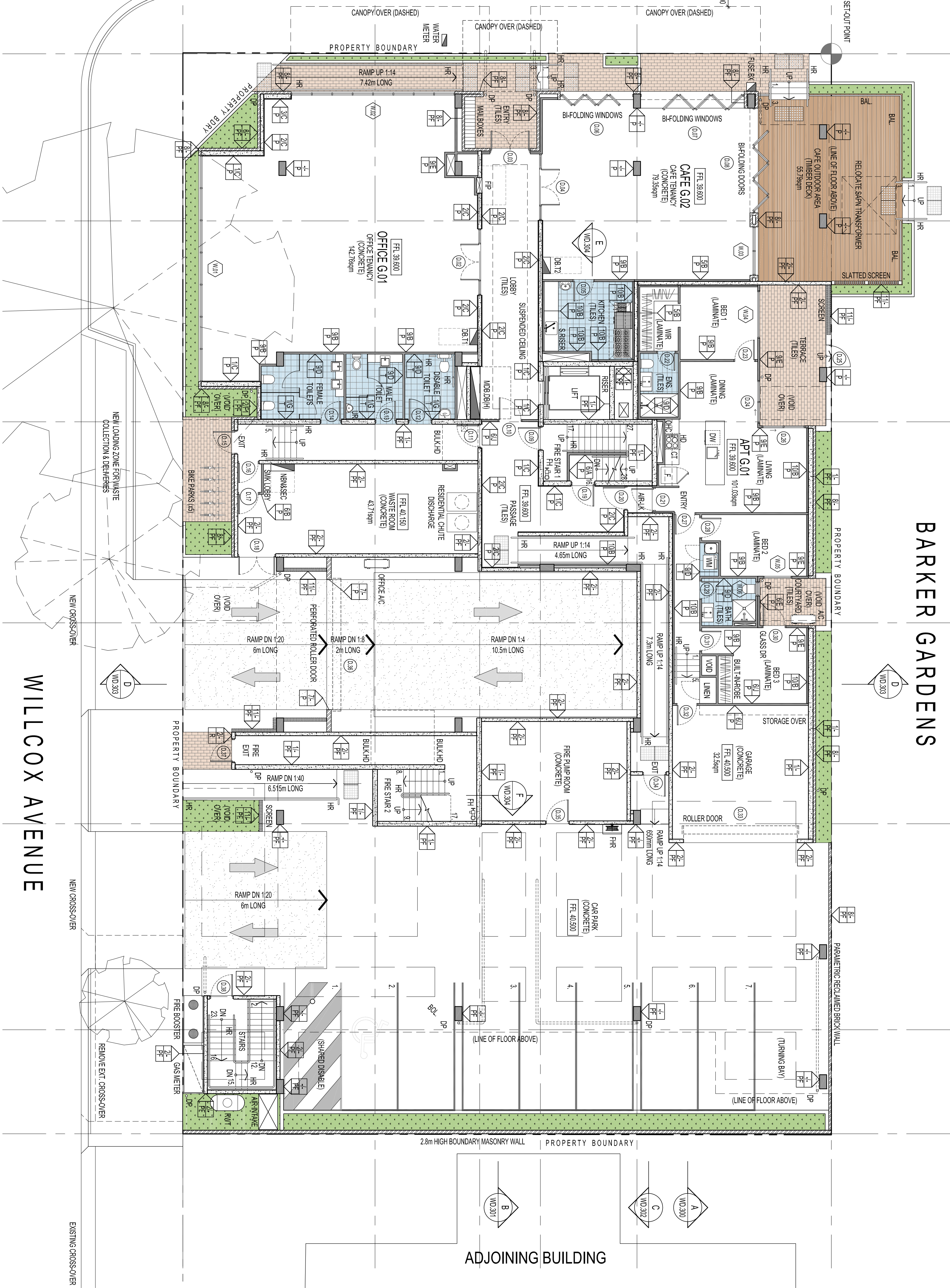
D

C

B

A

PROSPECT ROAD



LEVEL GROUND FLOOR PLAN

SCALE 1:100

STATUS NOTE

NEW STEEL FRAME STAIR CASE & CONCRETE LANDINGS WITH SLIPRESISTANT HEAD COLOUR USING 15mm LANDING AS PER PAGE D2.4 FOR R/O AND 50mm TIMBER HANDRAIL FIXED TO WALL.

ALL GROSS 250mm

RESIST (MKT)
FIRE STAIRWELL 1
STEPS 1 - 27-21 EQUAL 47.5mm
STEPS 2 - 42-26 EQUAL 177mm
STEPS 3 - 42-26 EQUAL 177mm

50MM STEEL HANDRAILS TO BE SET OFF 50mm FROM FACE OF CONTIGUOUS SPAN WITH MAX. 15mm GAP BETWEEN BARS. STAIR TREAD NOSINGS NOT LESS THAN 50mm & NOT GREATER THAN 75mm FL WIDTH & NO DIFFERENCE IN LEVEL OF 5mm IN A COLOUR 3% CONTRAST TO THE BACKGROUND.

WILCOX AVENUE

DOOR HARDWARE NOTE
ALL REQUIRED EXIT OR DOORS IN PATHS OF TRAVEL COMPLY WITH BCA-D22.1 & MUST:

- OPERATE WITHOUT A KEY & WITH A SINGLE HAND DOWNWARD ACTION OR PUSH ACTION ON A SINGLE DEVICE
- BE MOUNTED AT A HEIGHT BETWEEN 900-1100mm FROM FINISHED FLOOR LEVEL WHERE LOCATED IN ACCESSIBLE PATHS AS REQUIRED UNDER BCA-D33.
- BE SUCH THAT THE HAND OF A PERSON WHO CANNOT GRIP WILL NOT SLIP DURING OPERATION OF LATCH AND
- HAVE A CLEARANCE BETWEEN THE BACK OF THE HANDLE AND THE FACE OF THE DOOR AT THE CENTRE GRIP OF NOT LESS THAN 55mm & NOT MORE THAN 45mm OR - BE A SINGLE PUSHING ACTION

FRESMOKE DOOR SIGN NOTE
PROVIDE SIGNS TO FIRE ISOLATED STAIR DOORS AS PER BCA-D22.1 INCLUDING "FIRE SAFETY DOOR. DO NOT OBSTRUCT. DO NOT KEEP OPEN ETC."

NATHERS REPORT

THIS DRAWING IS TO BE READ IN CONJUNCTION WITH ALL OTHER DRAWINGS, INSULATION & GLAZING REQUIREMENTS.

ACOUSTIC NOTE

IN ADDITION, REFER TO COUPL PLANNING CONDITION 16 FOR GLAZING ACOUSTIC.
- 6mm LAMINATED GLAZING FOR GROUND FLOOR TANKS
- 6mm LAMINATED GLAZING (1mm GAP) FROM GLAZING FOR BEDROOMS FACING PROSPECT ROAD

WRITTEN DIMENSION TO BE TAKEN IN PREFERENCE TO SCALE
GROUND LEVELS AND FINISHED FLOOR LEVELS INDICATED ARE APPROXIMATE ONLY & ARE TO BE CONFIRMED ON SITE

ALL FLASHING, MEMBRANES AND TIES WHERE REQUIRED SHALL BE IN ACCORDANCE WITH THE NCC

LEGEND

- WC WATER CLOSET (TOILET)
- URINAL
- SH SHOWER
- B BATH
- B BENCHTOP
- F Fridge
- DW DISHWASHER
- HP HOT PLATE
- WO WOODEN OVERCLOTHES
- WM WASHING MACHINE
- SD SLENDER DOOR
- STD CAVITY SLIDING DOOR
- AC AIR CONDITIONER
- FG FRENCH GLASS
- BA BALUSTRADE
- DP DOWNPIPE
- RH RAINWATER HEAD
- SR SPRINKLER
- FH FIRE HYDRANT
- FR FIRE ROSE REEL
- BOL BOLLARD
- RMT RAINWATER TANK
- FL FINISHED FLOOR LEVEL
- CL CEILING LEVEL

ADJOINING BUILDING

LATCH DEVICE AND OPERATION OF ALL REQUIRED EXIT DOORS, OR IN THE PATH OF TRAVEL, TO A REQUIRED EXIT TO BE SELECTED & INSTALLED IN ACCORDANCE WITH NCC-D22.1

WC TOILET TO ALLOW FOR OUTWARD OPENING OF FLOOR OR PROVIDE REMOVABLE HINGES TO WC TOILET DOOR
ALL WATERPROOFING TO WET AREAS BE IN ACCORDANCE WITH AS1620.4
REFER TO ENGINEERS DESIGN DOCUMENTATION FOR STRUCTURAL & ELECTRICAL HYDRAULIC AND CIVIL DETAILS (IF APPLICABLE)



CITY

PERPONE

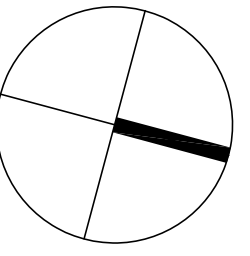
WEB: WWW.PERPONE.COM.AU	4424
EMAIL: SALES@PERPONE.COM.AU	49 413 271 331
PHONE: WWW.PERPONE.COM.AU	1300 743 746
1717 PROSPECT ROAD, PROSPECT SA 5082	
1717 PROSPECT ROAD, PROSPECT SA 5082	
1717 PROSPECT ROAD, PROSPECT SA 5082	
1717 PROSPECT ROAD, PROSPECT SA 5082	
1717 PROSPECT ROAD, PROSPECT SA 5082	
1717 PROSPECT ROAD, PROSPECT SA 5082	
1717 PROSPECT ROAD, PROSPECT SA 5082	
1717 PROSPECT ROAD, PROSPECT SA 5082	

FOR CONSTRUCTION

CITY & BRC PTY LTD
117 PROSPECT ROAD
PROSPECT SA 5082
THE WILCOX APARTMENTS

GROUND FLOOR PLAN

DATE: 18/03/2018	DATE: 18/03/2018
DRAWN: D. PERPONE	DRAWN: D. PERPONE
CHECKED: A1	CHECKED: A1
SCALE: 1:100	SCALE: 1:100
WD: 102	WD: 102



ORIGINAL DRAWING - A1 SIZE SHEET
SCALE 1:100
0 1 2 3 4 5
METRES
10

BUILDER TO CHECK AND CONFIRM ALL DIMENSIONS PRIOR TO COMMENCEMENT OF CONSTRUCTION

STEWARDS, DRAINAGE AND LEVELS TO BE VENTED TO THE OUTSIDE

CONSULTANT REPORT NOTE

IN ADDITION, REFER TO THE FOLLOWING CONSULTANT REPORTS FOR FURTHER REQUIREMENTS:

- VAPAC ACOUSTIC ASSESSMENT
- LIQUID CONSULTING HANDBOOK ASSESSMENT (GLAZING & INSULATION ASSESSMENT)
- COUPL PLANNING CONDITIONS

WALL COATING TYPES

- P PAINT COLOUR FINISH AS SPECIFIED
- T WALL TILES AS SELECTED
- PF PRE FINISHED
- R HIGH-BUILD ACRYLIC TEXTURE-COATING DULUX
- ACR-TEX: ROVEL FINISHED
- MINIMUM 20mm THICKNESS

WALL TYPES

10mm AQUACREK PASTERBOARD ON 25mm ROUNDO FLARING CHANNELS AT 45mm CTS

WALL TYPES

10mm AQUACREK PASTERBOARD, FLUSH JOINTED

WALL TYPES

10mm AQUACREK PASTERBOARD, FLUSH JOINTED

WALL TYPES

10mm AQUACREK PASTERBOARD, FLUSH JOINTED

WALL TYPES

10mm AQUACREK PASTERBOARD, FLUSH JOINTED

WALL TYPES

10mm AQUACREK PASTERBOARD, FLUSH JOINTED

Roofing Notes

This drawing is to be read in conjunction with all other drawings, documentation, schedules and specifications.

Acoustic Note

Refer to the WPC Engineers Acoustic Assessment Report for the required noise limits.

In addition, refer to Council Planning Condition 16 for glazing acoustic.

8mm laminated glazing for ground floor terraces

8mm laminated glazing (10mm gap) between all roof stormwater be overtopped away from footings and building

Eaves gutters to be provided with uniform minimum falls as per standards and all roof stormwater be diverted away from footings and building

Roofing Legend

Refer to Engineer's drawings for air-conditioning and exhaust unit locations and details

[WD1] Denotes new KLP-LOK roof sheeting at nominated fall profile as selected

DP Downpipe

Denotes 100mm DIA. COLORBOND DOWNPIPE

GS Denotes standard 100TAS/MP proprietary item with 15mm DIA. OUTLET

Builder to allow for all necessary metal upstand flashing to all new roof penetrations associated with new air-conditioning and exhaust equipment

Builder to provide drainage line from AC condensers entire distance to ground level. Refer to Engineer's drawings

Structure of all air-conditioning plant platforms, solar panels or other equipment as per Engineer's drawings

APPROVED TO BE ADAPTED		DATE
A	17/01/19	FOR CONSTRUCTION
B	17/01/19	FOR CONSTRUCTION
DATE	DATE	DATE



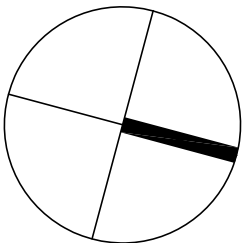
CITY

PERONE

FOR CONSTRUCTION

CITY & BRC PTY LTD
117 PROSPECT ROAD
PROSPECT SA 5062
THE WILCOX APARTMENTS

DATE: 18/01/19	DATE: MARCH 2018
DRAWN: [signature]	CHECKED: [signature]
SCALE: 1:100	PAPER: A1
VERSION: 02	REVISION: B
WD/107	



ORIGINAL DRAWING - A1 SIZE SHEET

SCALE 1:100

0 1 2 3 4 5

METRES

10

FLOOR TO FLOOR SEPARATION NOTE

FLOOR TO FLOOR SEPARATION MUST OCCUR VIA FIRE RATED FLOOR PENETRATIONS

WINDOW CLEANING MAINTENANCE ACCESS NOTE

ANCHORAGES FOR SAFETY HARNESS SHALL BE DESIGNED AND INSTALLED IN ACCORDANCE WITH AS/NZS 1891.4 AND BE CONSTRUCTED OF CORROSION RESISTANT METAL

ZINCALUME KLP-LOK ROOF SHEETING AT 3° FALL ON PURLINS TO ENGINEERS DETAIL

9mm HARDFLEX CLADDING WITH RENDER PAINT FINISH AS SELECTED

SET-OUT POINT

PARAPET

PARAPET

PARAPET

PARAPET

PARAPET

PARAPET

ZINCALUME KLP-LOK ROOF SHEETING AT 1° FALL ON GRADED PURLINS TO LIFT SHAFT & FIRE STAIRS 1

DP# SPR

KITCHEN & EXHAUST AIR EXTRACTOR

EVES GUTTER

ROOF RIDGE

ROOF RIDGE

ROOF RIDGE

ROOF RIDGE

ROOF RIDGE

ROOF RIDGE

ROOF RIDGE

ROOF RIDGE

ROOF RIDGE

ROOF RIDGE

ROOF RIDGE

ROOF RIDGE

ROOF RIDGE

ROOF RIDGE

ROOF RIDGE

ROOF RIDGE

ROOF RIDGE

ROOF RIDGE

ROOF RIDGE

ROOF RIDGE

ROOF RIDGE

ROOF RIDGE

ROOF RIDGE

ROOF RIDGE

ROOF RIDGE

ROOF RIDGE

ROOF RIDGE

ROOF RIDGE

ROOF RIDGE

ZINCALUME KLP-LOK ROOF SHEETING AT 3° FALL ON PURLINS TO ENGINEERS DETAIL

ZINCALUME KLP-LOK ROOF SHEETING AT 3° FALL ON PURLINS TO ENGINEERS DETAIL

ZINCALUME KLP-LOK ROOF SHEETING AT 3° FALL ON PURLINS TO ENGINEERS DETAIL

ZINCALUME KLP-LOK ROOF SHEETING AT 3° FALL ON PURLINS TO ENGINEERS DETAIL

ZINCALUME KLP-LOK ROOF SHEETING AT 3° FALL ON PURLINS TO ENGINEERS DETAIL

ZINCALUME KLP-LOK ROOF SHEETING AT 3° FALL ON PURLINS TO ENGINEERS DETAIL

ZINCALUME KLP-LOK ROOF SHEETING AT 3° FALL ON PURLINS TO ENGINEERS DETAIL

ZINCALUME KLP-LOK ROOF SHEETING AT 3° FALL ON PURLINS TO ENGINEERS DETAIL

ZINCALUME KLP-LOK ROOF SHEETING AT 3° FALL ON PURLINS TO ENGINEERS DETAIL

ZINCALUME KLP-LOK ROOF SHEETING AT 3° FALL ON PURLINS TO ENGINEERS DETAIL

ZINCALUME KLP-LOK ROOF SHEETING AT 3° FALL ON PURLINS TO ENGINEERS DETAIL

ZINCALUME KLP-LOK ROOF SHEETING AT 3° FALL ON PURLINS TO ENGINEERS DETAIL

ZINCALUME KLP-LOK ROOF SHEETING AT 3° FALL ON PURLINS TO ENGINEERS DETAIL

ZINCALUME KLP-LOK ROOF SHEETING AT 3° FALL ON PURLINS TO ENGINEERS DETAIL

ZINCALUME KLP-LOK ROOF SHEETING AT 3° FALL ON PURLINS TO ENGINEERS DETAIL

ZINCALUME KLP-LOK ROOF SHEETING AT 3° FALL ON PURLINS TO ENGINEERS DETAIL

ZINCALUME KLP-LOK ROOF SHEETING AT 3° FALL ON PURLINS TO ENGINEERS DETAIL

ZINCALUME KLP-LOK ROOF SHEETING AT 3° FALL ON PURLINS TO ENGINEERS DETAIL

ZINCALUME KLP-LOK ROOF SHEETING AT 3° FALL ON PURLINS TO ENGINEERS DETAIL

ZINCALUME KLP-LOK ROOF SHEETING AT 3° FALL ON PURLINS TO ENGINEERS DETAIL

ZINCALUME KLP-LOK ROOF SHEETING AT 3° FALL ON PURLINS TO ENGINEERS DETAIL

ZINCALUME KLP-LOK ROOF SHEETING AT 3° FALL ON PURLINS TO ENGINEERS DETAIL

ZINCALUME KLP-LOK ROOF SHEETING AT 3° FALL ON PURLINS TO ENGINEERS DETAIL

ZINCALUME KLP-LOK ROOF SHEETING AT 3° FALL ON PURLINS TO ENGINEERS DETAIL

ZINCALUME KLP-LOK ROOF SHEETING AT 3° FALL ON PURLINS TO ENGINEERS DETAIL

ZINCALUME KLP-LOK ROOF SHEETING AT 3° FALL ON PURLINS TO ENGINEERS DETAIL

ZINCALUME KLP-LOK ROOF SHEETING AT 3° FALL ON PURLINS TO ENGINEERS DETAIL

ZINCALUME KLP-LOK ROOF SHEETING AT 3° FALL ON PURLINS TO ENGINEERS DETAIL

ZINCALUME KLP-LOK ROOF SHEETING AT 3° FALL ON PURLINS TO ENGINEERS DETAIL

ZINCALUME KLP-LOK ROOF SHEETING AT 3° FALL ON PURLINS TO ENGINEERS DETAIL

ZINCALUME KLP-LOK ROOF SHEETING AT 3° FALL ON PURLINS TO ENGINEERS DETAIL

ZINCALUME KLP-LOK ROOF SHEETING AT 3° FALL ON PURLINS TO ENGINEERS DETAIL

ZINCALUME KLP-LOK ROOF SHEETING AT 3° FALL ON PURLINS TO ENGINEERS DETAIL

ZINCALUME KLP-LOK ROOF SHEETING AT 3° FALL ON PURLINS TO ENGINEERS DETAIL

ZINCALUME KLP-LOK ROOF SHEETING AT 3° FALL ON PURLINS TO ENGINEERS DETAIL

ZINCALUME KLP-LOK ROOF SHEETING AT 3° FALL ON PURLINS TO ENGINEERS DETAIL

ZINCALUME KLP-LOK ROOF SHEETING AT 3° FALL ON PURLINS TO ENGINEERS DETAIL

ZINCALUME KLP-LOK ROOF SHEETING AT 3° FALL ON PURLINS TO ENGINEERS DETAIL

ZINCALUME KLP-LOK ROOF SHEETING AT 3° FALL ON PURLINS TO ENGINEERS DETAIL

ZINCALUME KLP-LOK ROOF SHEETING AT 3° FALL ON PURLINS TO ENGINEERS DETAIL

ZINCALUME KLP-LOK ROOF SHEETING AT 3° FALL ON PURLINS TO ENGINEERS DETAIL

ZINCALUME KLP-LOK ROOF SHEETING AT 3° FALL ON PURLINS TO ENGINEERS DETAIL

ZINCALUME KLP-LOK ROOF SHEETING AT 3° FALL ON PURLINS TO ENGINEERS DETAIL

ZINCALUME KLP-LOK ROOF SHEETING AT 3° FALL ON PURLINS TO ENGINEERS DETAIL

ZINCALUME KLP-LOK ROOF SHEETING AT 3° FALL ON PURLINS TO ENGINEERS DETAIL

ZINCALUME KLP-LOK ROOF SHEETING AT 3° FALL ON PURLINS TO ENGINEERS DETAIL

ZINCALUME KLP-LOK ROOF SHEETING AT 3° FALL ON PURLINS TO ENGINEERS DETAIL

ZINCALUME KLP-LOK ROOF SHEETING AT 3° FALL ON PURLINS TO ENGINEERS DETAIL

ZINCALUME KLP-LOK ROOF SHEETING AT 3° FALL ON PURLINS TO ENGINEERS DETAIL

ZINCALUME KLP-LOK ROOF SHEETING AT 3° FALL ON PURLINS TO ENGINEERS DETAIL

ZINCALUME KLP-LOK ROOF SHEETING AT 3° FALL ON PURLINS TO ENGINEERS DETAIL

ZINCALUME KLP-LOK ROOF SHEETING AT 3° FALL ON PURLINS TO ENGINEERS DETAIL

ZINCALUME KLP-LOK ROOF SHEETING AT 3° FALL ON PURLINS TO ENGINEERS DETAIL

ZINCALUME KLP-LOK ROOF SHEETING AT 3° FALL ON PURLINS TO ENGINEERS DETAIL

ZINCALUME KLP-LOK ROOF SHEETING AT 3° FALL ON PURLINS TO ENGINEERS DETAIL

ZINCALUME KLP-LOK ROOF SHEETING AT 3° FALL ON PURLINS TO ENGINEERS DETAIL

ZINCALUME KLP-LOK ROOF SHEETING AT 3° FALL ON PURLINS TO ENGINEERS DETAIL

ZINCALUME KLP-LOK ROOF SHEETING AT 3° FALL ON PURLINS TO ENGINEERS DETAIL

ZINCALUME KLP-LOK ROOF SHEETING AT 3° FALL ON PURLINS TO ENGINEERS DETAIL

ZINCALUME KLP-LOK ROOF SHEETING AT 3° FALL ON PURLINS TO ENGINEERS DETAIL

ZINCALUME KLP-LOK ROOF SHEETING AT 3° FALL ON PURLINS TO ENGINEERS DETAIL

ZINCALUME KLP-LOK ROOF SHEETING AT 3° FALL ON PURLINS TO ENGINEERS DETAIL

ZINCALUME KLP-LOK ROOF SHEETING AT 3° FALL ON PURLINS TO ENGINEERS DETAIL

ZINCALUME KLP-LOK ROOF SHEETING AT 3° FALL ON PURLINS TO ENGINEERS DETAIL

ZINCALUME KLP-LOK ROOF SHEETING AT 3° FALL ON PURLINS TO ENGINEERS DETAIL

ZINCALUME KLP-LOK ROOF SHEETING AT 3° FALL ON PURLINS TO ENGINEERS DETAIL

ZINCALUME KLP-LOK ROOF SHEETING AT 3° FALL ON PURLINS TO ENGINEERS DETAIL

ZINCALUME KLP-LOK ROOF SHEETING AT 3° FALL ON PURLINS TO ENGINEERS DETAIL

ZINCALUME KLP-LOK ROOF SHEETING AT 3° FALL ON PURLINS TO ENGINEERS DETAIL

ZINCALUME KLP-LOK ROOF SHEETING AT 3° FALL ON PURLINS TO ENGINEERS DETAIL

ZINCALUME KLP-LOK ROOF SHEETING AT 3° FALL ON PURLINS TO ENGINEERS DETAIL

ZINCALUME KLP-LOK ROOF SHEETING AT 3° FALL ON PURLINS TO ENGINEERS DETAIL

ZINCALUME KLP-LOK ROOF SHEETING AT 3° FALL ON PURLINS TO ENGINEERS DETAIL

ZINCALUME KLP-LOK ROOF SHEETING AT 3° FALL ON PURLINS TO ENGINEERS DETAIL

ZINCALUME KLP-LOK ROOF SHEETING AT 3° FALL ON PURLINS TO ENGINEERS DETAIL

ZINCALUME KLP-LOK ROOF SHEETING AT 3° FALL ON PURLINS TO ENGINEERS DETAIL

ZINCALUME KLP-LOK ROOF SHEETING AT 3° FALL ON PURLINS TO ENGINEERS DETAIL

ZINCALUME KLP-LOK ROOF SHEETING AT 3° FALL ON PURLINS TO ENGINEERS DETAIL

ZINCALUME KLP-LOK ROOF SHEETING AT 3° FALL ON PURLINS TO ENGINEERS DETAIL

ZINCALUME KLP-LOK ROOF SHEETING AT 3° FALL ON PURLINS TO ENGINEERS DETAIL